

Retractable In-Ceiling Mounted Screen with Motorized Trap Door Tab-Tensioned Surfaces

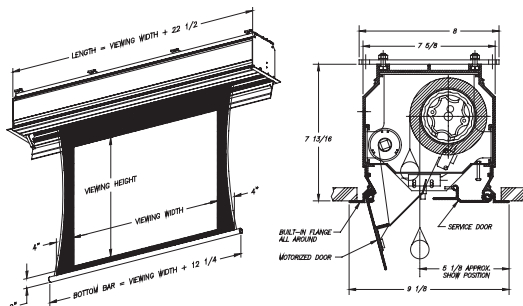


Features:

- » Motorized trap door providing dust free surface storage
- » Heavy duty aluminum housing with choice of black or white finishes
- » Built-in ceiling flange
- » Ribbed aluminum 3" roller with FRS™ (Fabric Relief Step)
- » Acoustical dampening DDR™ (Dual Dampened Roller)
- » Includes Decora wall switch
- » Interfaces with all A/V control systems
- » Standard with 12" black leader
- » Additional leader available upon request
- » Custom finishes available
- » 5 year warranty

The Vision XTC-IV is Vutec's Top of the Line In-ceiling Motorized Trap Door Screen

**4K
READY**



| PART NUMBER + SURFACE OPTION + VOLTAGE | | | | | SURFACES | | Shipping |
|---|------------------|-------------------|----------------|--|--|-----------------|----------|
| EXAMPLE: XTC4043-057 BOB 1 | | | | | BriteWhite Opaque: (BO) PearlBrite: (PB) Rear-Vu: (RV) GreyDove: (GD) | | |
| Diagonal | Viewing Area | Overall Dimension | Part Numbers | Housing Color Black: (B) White: (W) Custom: (C) | MSRP (\$) | Dealer Net (\$) | |
| <p>1 = 110V OR 2 = 220V</p> <p>16:9 HDTV Format</p> | | | | | | | |
| 4:3 Standard Format | | | | | CONTACT YOUR ACCOUNT MANAGER FOR PRICES | | |
| 78" | 46.75" x 62.25" | 84.75" | XTC4046-062XXX | B/W/C | | | 280 lbs. |
| 84" | 50.50" x 67.25" | 89.75" | XTC4050-067XXX | B/W/C | | | 310 lbs. |
| 100" | 60" x 80" | 102.50" | XTC4060-080XXX | B/W/C | | | 350 lbs. |
| 120" | 72" x 96" | 118.50" | XTC4072-096XXX | B/W/C | | | 250 lbs. |
| 144" | 86.25" x 115.25" | 137.50" | XTC4086-115XXX | B/W/C | | | 280 lbs. |
| 150" | 90" x 120" | 142.50" | XTC4090-120XXX | B/W/C | | | 310 lbs. |
| 160" | 96" x 128" | 150.50" | XTC4096-128XXX | B/W/C | | | 350 lbs. |
| 180" | 108" x 144" | 166.50" | XTC4108-144XXX | B/W/C | 350 lbs. | | |
| <p>16:9 HDTV Format</p> | | | | | | | |
| 92" | 45" x 80" | 102.50" | XTC4045-080XXX | B/W/C | CONTACT YOUR ACCOUNT MANAGER FOR PRICES | | 195 lbs. |
| 103" | 50.50" x 89.75" | 112.25" | XTC4050-089XXX | B/W/C | | | 225 lbs. |
| 110" | 54" x 96" | 118.50" | XTC4054-096XXX | B/W/C | | | 250 lbs. |
| 123" | 60" x 107" | 129.50" | XTC4060-107XXX | B/W/C | | | 270 lbs. |
| 133" | 65" x 116" | 138.50" | XTC4065-116XXX | B/W/C | | | 250 lbs. |
| 147" | 72" x 128" | 150.50" | XTC4072-128XXX | B/W/C | | | 270 lbs. |
| 159" | 78" x 138.50" | 161" | XTC4078-138XXX | B/W/C | | | 270 lbs. |
| 165" | 81" x 144" | 166.50" | XTC4081-144XXX | B/W/C | | | 300 lbs. |
| <p>16:10 Computer Format</p> | | | | | | | |
| 94" | 50" x 80" | 98.50" | XTC4050-080XXX | B/W/C | CONTACT YOUR ACCOUNT MANAGER FOR PRICES | | 195 lbs. |
| 106" | 56" x 89.75" | 108.25" | XTC4056-089XXX | B/W/C | | | 225 lbs. |
| 113" | 60" x 96" | 114.50" | XTC4060-096XXX | B/W/C | | | 250 lbs. |
| 126" | 67" x 107" | 125.50" | XTC4067-107XXX | B/W/C | | | 270 lbs. |
| 137" | 72.50" x 116" | 134.50" | XTC4072-116XXX | B/W/C | | | 250 lbs. |
| 151" | 80" x 128" | 146.50" | XTC4080-128XXX | B/W/C | | | 270 lbs. |
| 163" | 86.50" x 138.50" | 157" | XTC4086-138XXX | B/W/C | | | 270 lbs. |
| <p>2.35:1 Widescreen Format</p> | | | | | | | |
| 115" | 45" x 106" | 128.50" | XTC4045-106XXX | B/W/C | CONTACT YOUR ACCOUNT MANAGER FOR PRICES | | 250 lbs. |
| 129" | 50.50" x 118.75" | 141.25" | XTC4050-118XXX | B/W/C | | | 280 lbs. |
| 138" | 54" x 127" | 149.50" | XTC4054-127XXX | B/W/C | | | 310 lbs. |
| 153" | 60" x 141" | 163.50" | XTC4060-141XXX | B/W/C | | | 310 lbs. |

All measurements are nominal

Custom sizes and formats are available upon request



For assistance on selecting the proper Vision X product, contact a Vutec Account Manager at (954) 545-9000 Prices subject to change without prior notice

Learn more at www.visionxscreen.com