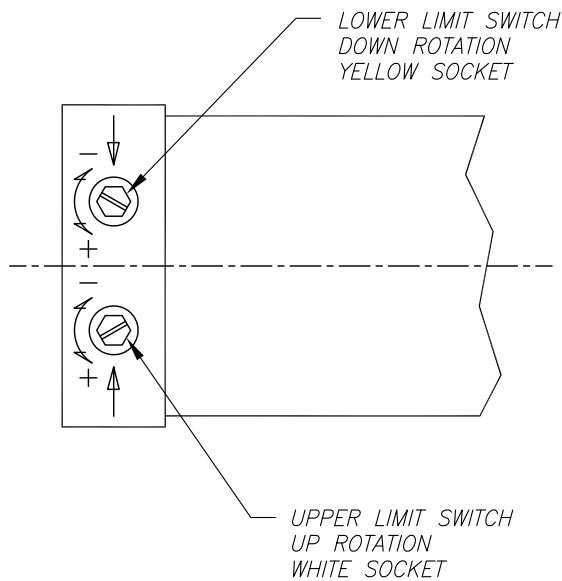
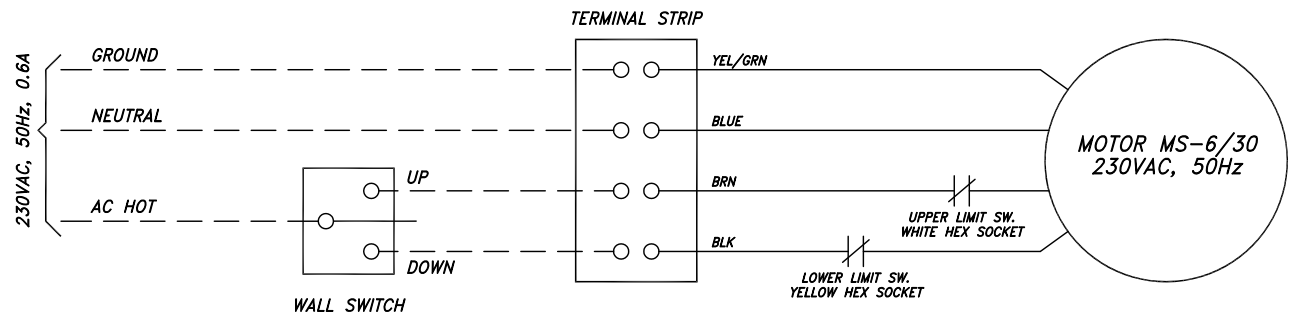


- NOTES:
- 1 - DASHED WIRING BY INSTALLERS. WIRING MUST BE PERFORMED BY QUALIFIED ELECTRICIANS AND COMPLIED WITH NATIONAL AND/OR LOCAL ELECTRICAL CODES AND REGULATIONS.
 - 2 - MOTOR: MS-6/30, 230VAC, 25 RPM, 0.6 Amp.
 - 3 - CURRENT IN-RUSH FACTOR: 8
 - 4 - SWITCH CONTROL: SPDT, 15 Amp @ 250 VAC



LIMIT SWITCH ADJUSTMENTS

- 1 - NORMALLY, USER DO NOT NEED TO ADJUST THE UPPER AND LOWER LIMITS OF THE MASK SCREEN UNLESS THE MOTOR HAS BEEN SERVICED.
- 2 - NOTE EACH FULL TURN OF THE LIMIT SWITCH SOCKET WILL CAUSE THE SCREEN TO TRAVEL APPROXIMATELY 1/2 INCH.
- 3 - TURN EACH SWITCH SOCKET IN THE DESIRED DIRECTION TO EFFECT THE CHANGE.
- 4 - SEND THE SCREEN UP OR DOWN TO SEE THE CHANGE
- 5 - REPEAT STEP 3 AS OFTEN TO SATISFY THE CHANGE REQUIREMENTS.

MOTOR LIMIT SWITCHES

USE 5/32 HEX KEY
OR 1/8 WIDE FLAT BLADE SCREWDRIVER TO TURN



DRAWN BY	DESCRIPTION	DRAWING NO.
01/16/07 HN	WIRING DIAGRAM - 230VAC	XFV-SCH_ALL
CHECKED BY	VISION XFV	SCALE: 1/20
		REV A