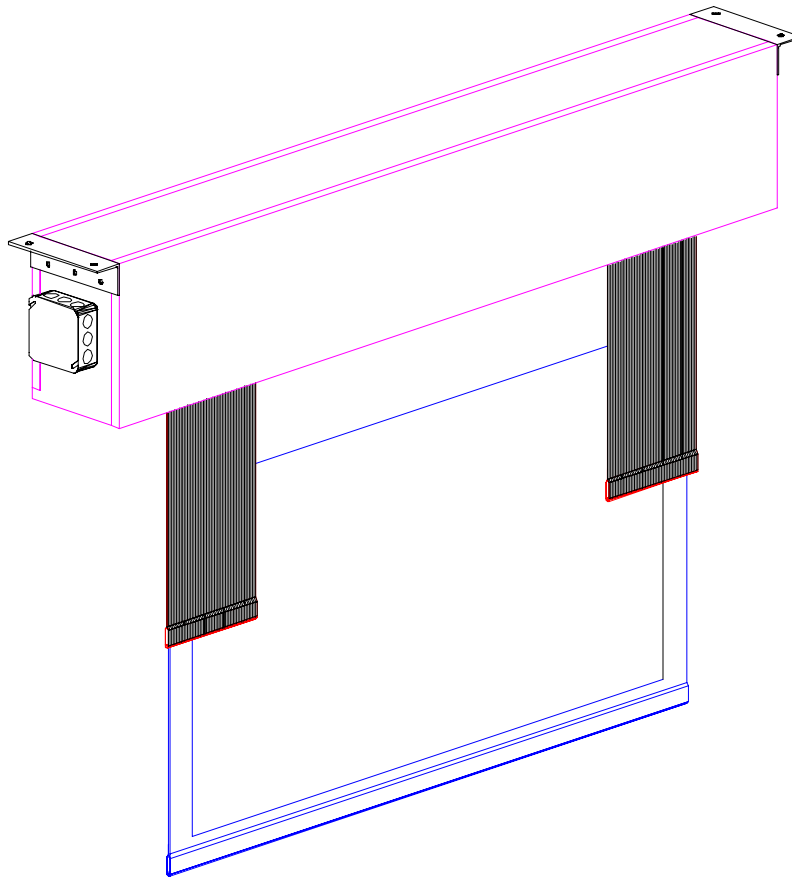


Installation Instructions

HOME THEATER SERIES

VISION XMV

DUAL-ASPECT MASKING SCREEN



VIDEO PROJECTION SCREENS

11/20/99
XMV:INSTL_A.doc

DUAL-ASPECT MASKING SCREEN

STANDARD (shown) and TAB-TENSIONED screens

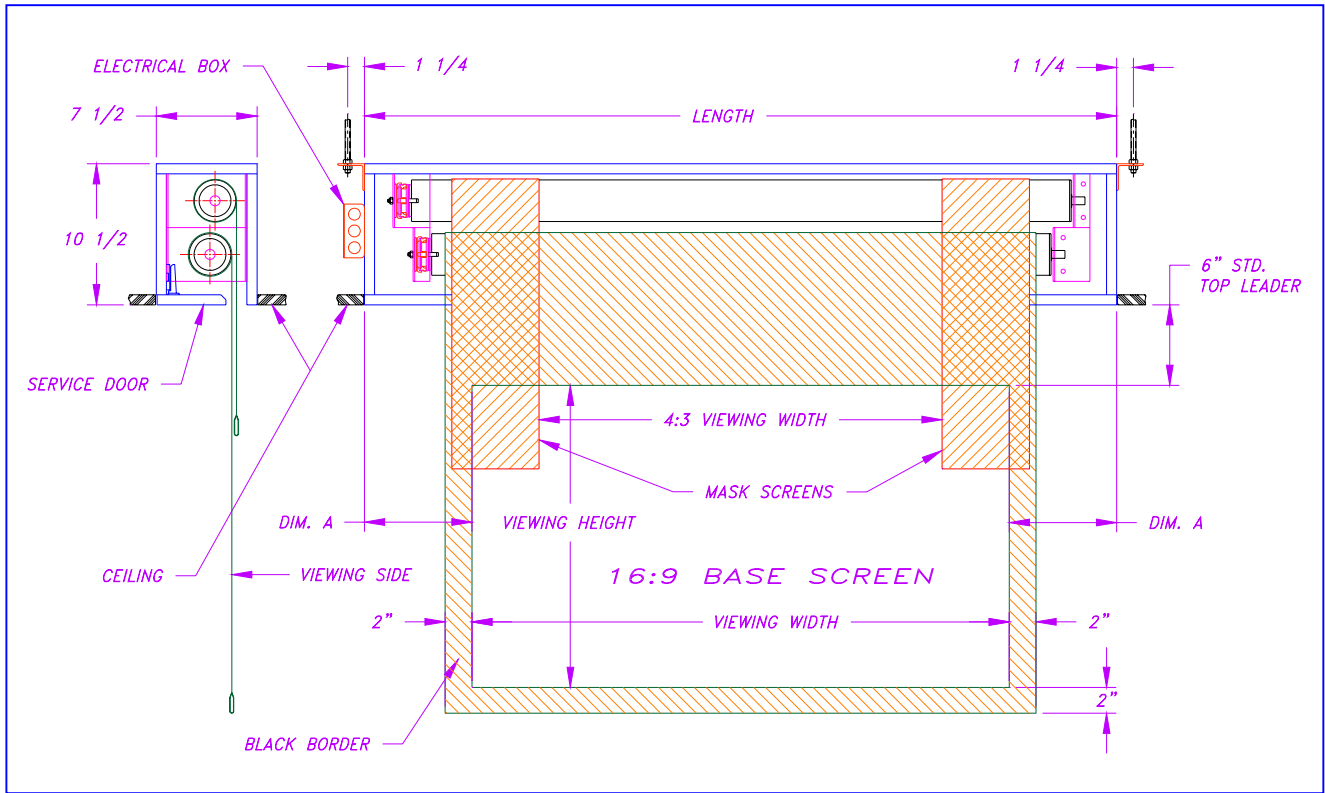


Figure 1

SCREEN TYPE	LENGTH	DIM. A
STANDARD	BASE SCREEN VIEWING WIDTH + 16"	8"
TAB-TENSIONED (Figure 3)	BASE SCREEN VIEWING WIDTH + 22"	11"

OPERATIONS

Send the main screen DOWN or UP by toggling the switch for that screen. Same operations are for the mask screen.

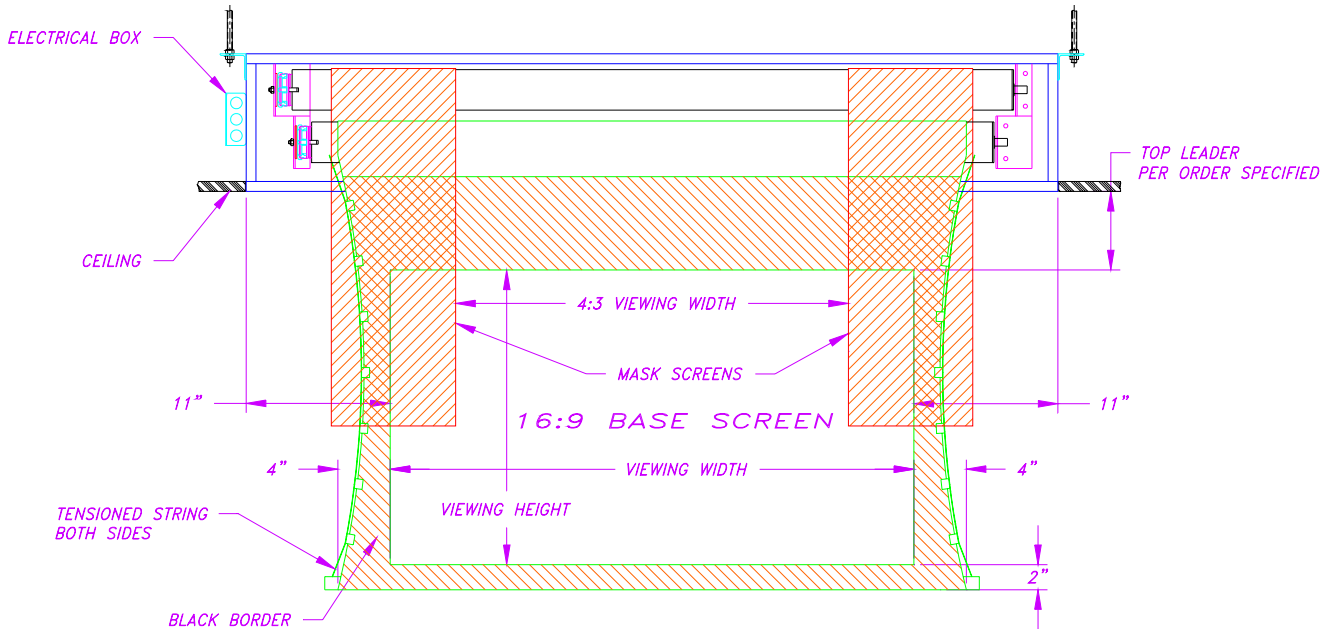


Figure 3

CHANGING THE UPPER AND LOWER LIMITS

Referring to Figure 3, the lower limit of the tab-tensioned screen has been set at the factory to specific ordered. It can not be made lower than the pre-set lower limit!

Referring to Figure 4, each screen motor has two built-in limit switches. The yellow socket sets the lower limit and the white socket sets the upper limit. Open the service door to access the motor limit switches.

- Use 5/32 hex key or 1/8 wide flat blade screwdriver for turning.
- Each full turn causes the screen to travel 1 inch approximately.
- **Counter-clockwise** turning is same as tightening a screw into the ceiling.

INCREASING THE LOWER LIMIT

- 1 - **STOP!** The following steps are not possible for tab-tensioned screen.
- 2 - Send the screen down to its lower limit. Leave the down switch on.
- 3 - Turn the yellow socket **clockwise**; the screen will advance downward as each full turn is made. Stop at the desired position.
- 4 - Send the screen back up few inches then sending it back down to check the new lower limit.
- 5 - Repeat the steps if the lower limit is still higher. See **Decreasing The Lower Limit** if the lower limit is lower than the desired position.

DECREASING THE LOWER LIMIT

- 1 - Send the screen down to its lower limit.
- 2 - Determine the number of full turn to set the lower limit above the desired position. Use the example and add at least 4 full turns to the desired travel.

Example: To raise the lower limit up 6 inches from current stopping point.

Make 10 full turns to be sure the next lower limit will be above the desired position.

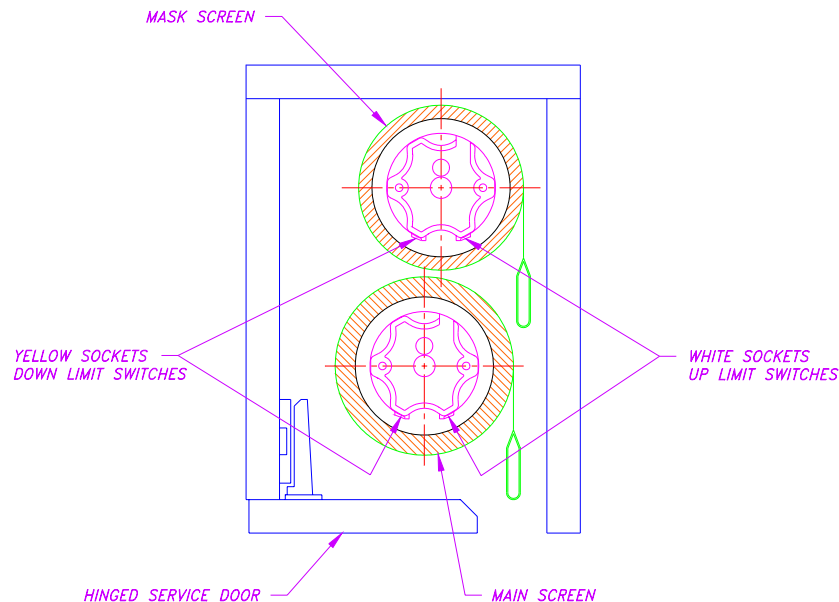


Figure 4

- 3 - Turn the yellow socket **counter-clockwise** the number of turns determined in step 2. There is no screen movement while doing so in this step.
- 4 - Send the screen up past the desired lower limit and stop. Send the screen down and it should stop above the desired lower limit as expected.
- 5 - See *Increasing The Lower Limit* to set the desired lower limit.

INCREASING THE UPPER LIMIT

- 1 - Send the screen up to its upper limit. Leave the up switch on
- 2 - Turn the white socket **clockwise**; the screen will advance upward as each full turn is made. Stop at the desire position.
- 3 - Repeat the steps as necessary.

DECREASING THE UPPER LIMIT

- 1 - Send the screen up to its upper limit.
- 2 - Determine the number of full turn to set the upper limit below the desired position. Use the example and add at least 4 full turns to the desired travel.

Example: To lower the upper limit 6 inches from current stopping point.

Make 10 full turns to be sure the next upper limit will be below the desired position.

- 3 - Turn the white socket **counter-clockwise** the number of turns determined in step 2. There is no screen movement while doing so in this step.
- 4 - Send the screen down past the desired upper limit and stop. Send the screen up and it should stop below the desired upper limit as expected.
- 5 - See *Increasing The Upper Limit* to set the desired upper limit.

ACCESSORIES INCLUDED

2 DECORATOR SPDT CENTER OFF SWITCH